

MXWall-LT

4-Input Up to 12-Output Video Wall Processor and Matrix Switch



All-in-one video wall and matrix solution with 1080p Full HD resolution output, integrated converter & scaler, flexible creative configuration modes, and user friendly control software!

FEATURES

- Complete hardware solution
- Plug-and-play ready
- 4-8 HDMI Inputs
- Up to 12 HDMI Outputs
- Supports DVI with adaptors
- 1080p (1920x1080 @ 60Hz) Output Resolution
- Creative video wall display modes
- Easy control (front-panel, software, and RS-232)
- HDCP and HDMI 1.4 compliant
- User-Friendly MXWall Manager Software
- For 4x8, 8x8, and 4x12 video wall setups

APPLICATIONS

- Corporate or Educational Presentations
- Airport Installations
- Wall Displays
- Digital Signage
- Dealer Rooms
- Control Rooms
- Shopping Centers
- Security
- Point-of-Sale Retail
- Entertainment Venues
- Corporate Lobbies
- Restaurants



FULLY SCALABLE VIDEO WALL PROCESSING SOLUTION

Combining full switching capabilities of a matrix and the versatile high definition capabilities of a converter-scaler, SmartAVI's MXWall-LT is an ideal all-in-one video wall processing solution. Specifically designed for demanding video display applications, the MXWall-LT lets users effortlessly manage and route 4 HDMI video sources up to 12 HD displays in real time and stellar picture resolutions up to 1080p.

The MXWall-LT features multi-screen configurations options and full scaling capabilities across a maximum of 12 screens. Completely compatible with HDCP and HDMI 1.4 connectors, the MXWall-LT reliably transmits HD content across fully scalable display configurations in real-time for 24/7 uninterrupted use and HD output.



| EXPANDABLE INPUT-OUTPUT CONFIGURATIONS | |
|--|--------|
| INPUT | OUTPUT |
| 4 | 8 |
| 8 | 8 |
| 4 | 12 |

HD imagery. Flexible layouts. Striking results: MXWall-LT offers top-grade video wall

USER-FRIENDLY, FLEXIBLE, POWERFUL

Plug-and-play ready, the MXWall-LT requires absolutely no technical skill to install and operate. Optimized for USB media and HDMI device compatibility, the MXWall-LT offers both ease and freedom to craft video wall displays in any capacity.

Perfect for mid-sized video-wall and digital signage arrangements, MXWall-LT is terrific for public displays, entertainment venues, and transportation hubs like airports. The MXWall-LT's reliability and scalability also make it an essential addition to control rooms, command centers, and other mission-critical environments: no matter your video wall needs, SmartAVI's MXWall-LT delivers them to amazing effect!

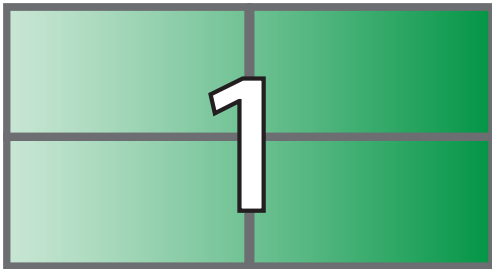


- **HD VIDEO**
- **IMAGES**
- **FLASH**
- **RSS**
- **MICROSOFT OFFICE FILES**
- **STREAMING**
- **AND MORE!**

MXWall-LT is media-format friendly and supports multiple file types ideal for crafting engaging video wall displays.

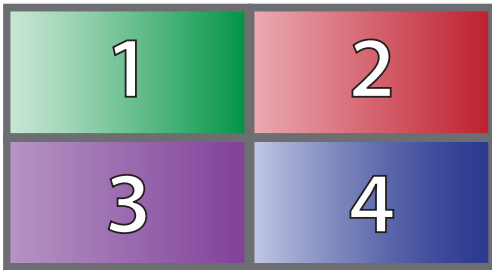
CREATIVE CONFIGURATIONS!

The MXWall-LT features a robust selection of display configurations that makes crafting your ideal multi-screen presentations effortless and effective!



Video Wall Mode:

Project video from a single input source to every screen on your video wall for an impressive 1080p HD display!



Individual Mode:

Create dynamic video collages by sending video source signals individually from each input to any output on your video wall.

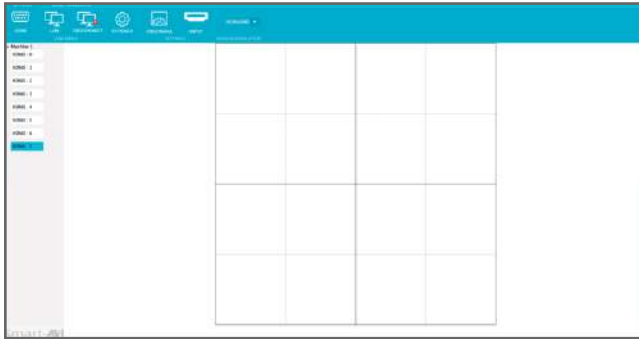


Quad Mode:

Project video from a single input source to any four connected screens in your video wall. These attractive quad configurations are a great way to add variety to your displays!

MXWall Manager Software

The MXWall-LT also comes with SmartAVI's intuitive MXWall Manager software, which allows users to create amazing video wall displays in minutes. Its click-and-drag operation and simple layout ensure managing video walls is easy and effective every time!



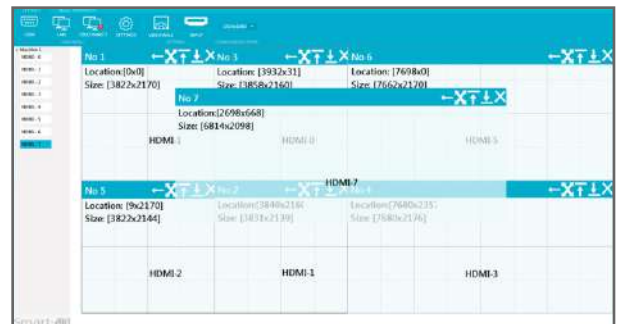
EASY TO USE:

The MXWall Manager software features a streamlined layout that keeps things simple and clear. Our intuitive menus and settings interface ensure set-ups always are easy and stress-free.

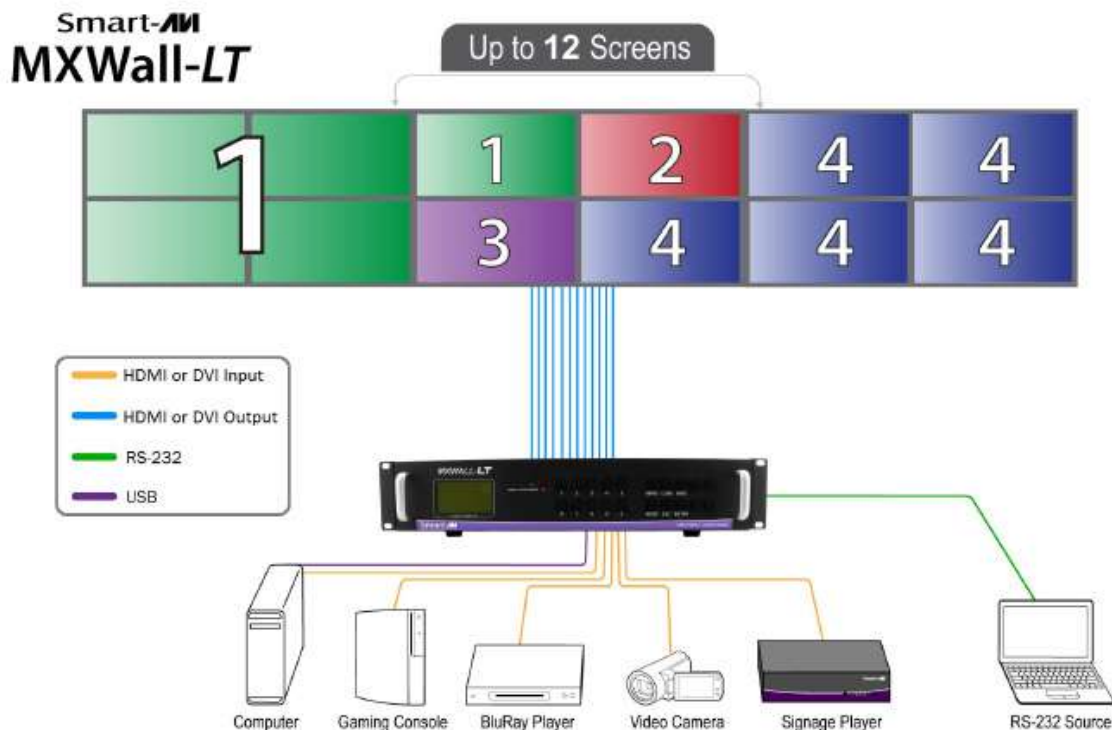
Choose from settings like aspect-ratio, rows, columns, video sources, and more! Adjust resolutions, scaling, and active monitors on the fly. Not happy with your current configuration? Just clear the workspace and start fresh: it's that simple!

FULLY CUSTOMIZABLE:

Take your pick of any of our versatile display modes. Select any screen and input the source you would prefer. Even multiple video sources can share a single screen with INDIVIDUAL and QUAD display modes. The possibilities are as endless as your creative potential!



APPLICATION DIAGRAM



SPECIFICATIONS



MXWall-LT (4x12) Front



MXWall-LT (4x12) Rear

VIDEO

| | |
|---------------------------|--|
| Video Amplifier Bandwidth | 3.2 G |
| Input Video Signal | Video (TMDS) 0.5~1.0Vpp |
| Input DDC Signal | 5 volts |
| Compliances | HDMI 1.4, HDCP |
| Pixel Rates | Clock frequency beyond 165Mpix/second |
| Format | 4:4:4 and 4:2:2 data input formats |
| Resolution | 480p, 720p, 1080i, 1080p |
| Input Card Format | 4-port HDMI card |
| Output Card Format | 4-port HDMI card |
| Input Slots | Up to 8 (2 cards) |
| Output Slots | Up to 12 (3 cards) |
| Video Type | RGB/YCBCR : 24/30/36-bits, YCBCR: 8/10/12/16/20/24-bits |

CONTROLS

| | |
|--------|------------------------------------|
| Front | Front-panel tactile switch buttons |
| RS-232 | 9600bps, Software flow DB9 Female |
| TCP/IP | Telnet |

OTHER

| | |
|---------------------|------------------------------------|
| Working Temperature | 0°C~+55°C |
| Storage Humidity | 10%~90% |
| Weight | 20 lbs. |
| Dimensions | 17 in (W) x 3.5 in (H) x 15 in (D) |
| Power Supply | 50/60Hz, 100~230 VAC |
| Consumption | 300W |

MXWALL MANAGER SOFTWARE

| | |
|------------------|-----------------------|
| Operating System | Windows 7-10, Android |
|------------------|-----------------------|

ORDERING INFORMATION

| Part No. | Description |
|-------------|--|
| MXWALL-LT-S | 4-Input 12-Output Video Wall Processor and Matrix Switch Includes: [MXWALL-LT, (CCPWR06)] |



Designed and Manufactured in the USA

www.smartavi.com

Tel: 800.AVI.2131 • 818.503.6200 • 11651
Vanowen St. North Hollywood, CA. 91605

Smart-AVI
SMART AUDIO VIDEO INNOVATION