

CommandCenter® Secure Gateway



CommandCenter Secure Gateway

Centralized access and control of your entire IT or lab infrastructure

CC-E1

- 2U form factor
- Dual power supplies

CC-V1

- 1U form factor
- Single power supply

Virtual Appliance

- Runs on VMware ESX and ESXi

Smart, Secure Remote Access and Control of Centralized and Distributed IT Assets

Available as a rack-mountable hardware solution or a virtual appliance, CC-SG lets you easily consolidate access to physical and virtualized servers, intelligent PDUs and serial devices from a single, secure appliance.

Raritan's CommandCenter Secure Gateway (CC-SG) provides IT and lab organizations with secure and consolidated access and control of all technology platforms at the application, operating system and BIOS level. CC-SG's single pane of glass helps simplify remote management and expedite troubleshooting of your physical and virtual servers, intelligent PDUs, and serial devices. Plus, it helps you maximize uptime and productivity of these devices, while reducing network overhead and the Total Cost of Ownership (TCO).

From small and medium server rooms to large enterprises with multiple data centers around the globe, CC-SG is relied upon worldwide for secure and consolidated remote access and control in a variety of settings. Its key features are designed to meet the needs of today's IT and lab administrators:

- ▶ Secure, single sign-on to a single IP address for managing all of Raritan's Dominion® series KVM, serial and intelligent PDU solutions
- ▶ Single point of access to physical servers (including blade systems and PCs), virtual machines and VMware® infrastructure such as the ESX/ESXi server and vCenter™ environments
- ▶ Centralized, role-based, user access policy management
- ▶ Flexible client options, including the HTML Access Client interface, Administration Client – and Mobile KVM Client for convenient server access and management of servers and PDUs from a smartphone or tablet PC
- ▶ Supports remote access and power control through service processors and IP tools – including HP® iLO, Dell® DRAC, IBM® RSA II and IMM, IPMI, RDP, VNC, SSH and Telnet, as well as Web browser applications
- ▶ Virtual media support
- ▶ Consolidated logging and audit trail, including detailed activity reports

CC-SG integrates with Raritan's Power IQ® for remote power control of devices managed by Power IQ. And easy CC-SG/Power IQ synchronization significantly reduces data administration.

Intuitive Menus and Easy Reporting

- ▶ The simple and intuitive "node view" allows users to easily identify and access any target system or device through a variety of interfaces, including in-band tools and out-of-band KVM switches
- ▶ Comprehensive reporting capabilities – everything from usage and auditing to assets and nodes

With All of the Core Features Expected of a Leader Like Raritan

Robust Security

- ▶ Low security profile, Linux®-based appliance architecture
- ▶ A powerful policy management tool allows access and control based on a broad range of user- customizable criteria, including time of day, physical location, application, operating system, department and function
- ▶ Available 128-bit and 256-bit AES encryption for end-to-end node access activity through AES-enabled Dominion devices
- ▶ Support for a broad range of authentication protocols, including LDAP, Active Directory®, RADIUS and TACACS+ in addition to local authentication and authorization capabilities
- ▶ Ability to import user groups from Active Directory servers for user authentication
- ▶ Support for two factor authentication with SecurID® on RADIUS servers
- ▶ IP-based access control lists (ACL), which grant or restrict user access by IP address
- ▶ Proxy mode for secure access to devices through firewalls/VPNs
- ▶ Strong user password authentication, SAS 70 compliance for configurable amount of failed login attempts and user ID lockout parameters

CommandCenter Secure Gateway Secure, Centralized Remote Access and Control of your IT or Lab Infrastructure

Out-of-Band KVM and Serial Access

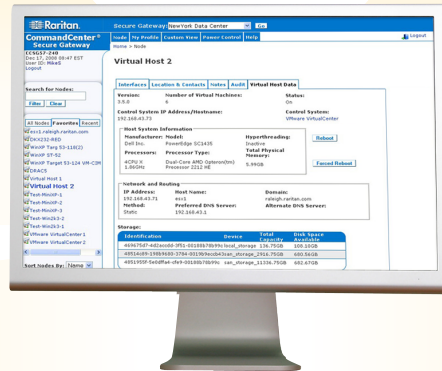


- ▶ **Raritan Dominion Solutions**
 - ▷ KX III , KSX II, KX2-101-V2 and SX
 - Rack Mounted and Blade Servers
 - Network Devices
 - ▷ Raritan Intelligent PDUs

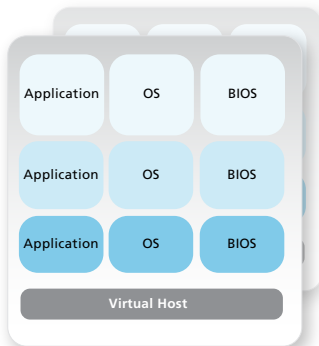
Remote Power Control



- ▶ **Power IQ Integration**
 - Outlet-Level Control via Raritan PX2 and Third-Party PDUs
- ▶ **Direct Control Via Raritan PX**



Virtual Machines



VMware

In-Band Data Center Access Solutions



- ▶ **IP Tools**
 - ▷ RDP
 - ▷ VNC
 - ▷ SSH
 - ▷ Telnet
 - ▷ Web Browser
- ▶ **Service Processors**
 - ▷ iLO
 - ▷ DRAC
 - ▷ RSA
 - ▷ IPMI
 - ▷ IMM

Secure, Centralized Access and Control

Integrated VMware Virtualization Support

- ▶ Consolidated access to physical and virtual servers, including centralized audit and reporting
- ▶ Intuitive virtualization discovery function allowing import and configuration of a virtual environment with a few simple steps, including configurable RDP, VNC or SSH application selection with single sign-on capabilities
- ▶ Simple virtual machine, virtual host server and vCenter information layout with relevant data and hyperlinks allowing easy navigating in the virtualization topology
- ▶ Easy setup of KVM access or remote power control to virtual host servers and vCenter using Raritan Dominion switches and "smart" power distribution units

High Availability and Redundancy

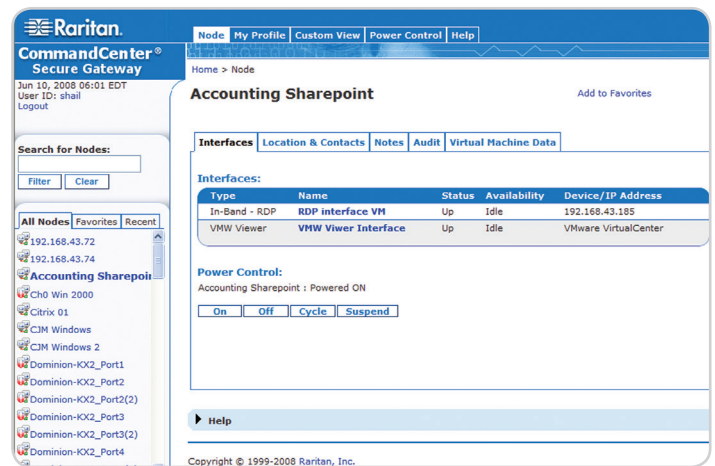
- ▶ Clustered hardware appliances delivers simple redundancy through primary and secondary CommandCenter Secure Gateway deployments.
- ▶ If deploying the virtual appliance, leverage VMware's High Availability or Fault Tolerance features for easy-to-use, cost effective high availability
- ▶ CC-SG "Neighborhood" configuration allows for a collection of up to 10 CC-SG units, deployed and working together to serve the access and control needs of the enterprise. Improves performance by distributing device and node access across multiple CC-SG appliances within a data center, across regions or organizationally.
- ▶ Hot-swappable RAID memory setup, dual hard drives and dual power supplies

Ease of Management for Administrators

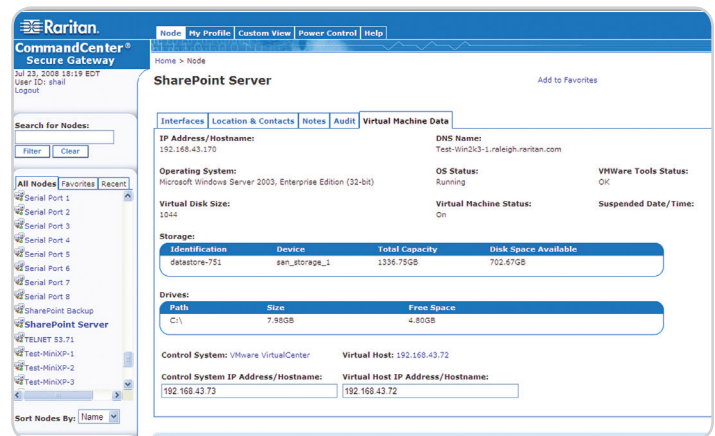
- ▶ Easy CSV import/export feature enables convenient entry of system profile data, such as categories and elements, nodes and interfaces and user/user groups
- ▶ Guided setup of user group and security policies
- ▶ Back up, copy and restore Raritan device configurations
- ▶ Syslog integration
- ▶ SNMP TRAPs/event support
- ▶ Easily configure individual user access policies to Universal Virtual Media™ on supported devices
- ▶ Central storage of firmware for Raritan KVM and serial switches for upgrading devices through the centralized and automated upgrade manager function
- ▶ Task manager and notification manager to schedule tasks and review status and results

Ease of access for users

- ▶ Intuitive and simplified view allowing for both remote access and power control from one screen
- ▶ Highly customizable views
- ▶ Secure chat feature allows users to troubleshoot problems collaboratively
- ▶ Easy-to-use, feature-rich HTML client
- ▶ Security hardened



Stay connected to virtual servers even when they are moved from one virtual host to another. Issue on, off, cycle or suspend virtual power commands using the control buttons.



Key information, such as network, storage and allocated resource, is displayed for each virtual machine. Additionally, one-click hyperlink is available to view and connect to the virtual host and control system managing this virtual machine.

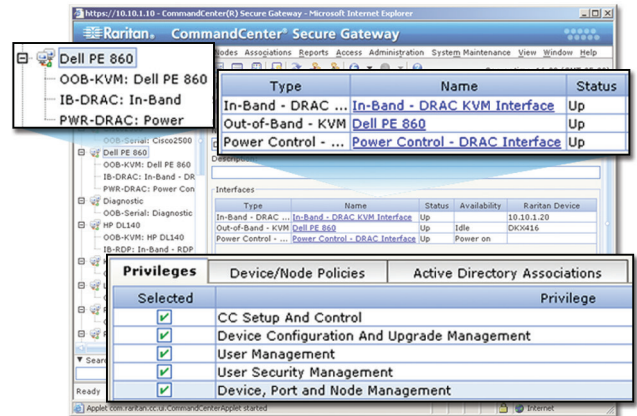
Hardware Specifications



CC-E1 shown

Features	V1	E1
Form Factor	1U	2U
Dimensions (DxWxH)	7.3" x 24.2" x 1.75"; 615 x 440 x 44 mm	17.3" x 27.5" x 3.5"; 699 x 440 x 89 mm
Weight	23.8 lbs; 10.8 kg	44.1 lbs; 20 kg
Power	Single Supply (1 x 300 watt)	Dual Supply (2 x 520 watt)
Operating Temperature	10° - 35° C; 50° - 95° F	10° - 40° C; 50° - 104° F
Mean Time Between Failure (MTBF)	38,269 hours	53,564 hours
KVM Admin Port	DB15 + PS/2 or USB Keyboard/Mouse	DB15 + PS/2 or USB Keyboard/Mouse
Serial Admin Port	DB9	DB9
Console Port	2 x USB 2.0 Ports	2 x USB 2.0 Ports
Hardware		
Processor	Intel® Core™ 2 Duo E8400	Intel® Core™ i7-860
Memory	4 GB	8 GB
Network Interfaces	(2) 10/100/1000 Eth. (RJ45)	(2) 10/100/1000 Eth. (RJ45)
Hard Disk & Controller	(2) 80 GB SATA @ 7,200 rpm, RAID 1	(2) 300 GB SATA @ 10,000 rpm, RAID 1
CD-ROM Drive	DVD-ROM	DVD-ROM
Remote Connection		
Protocols	TCP/IP, UDP, IPv4/IPv6, RADIUS, LDAP, TACACS+, SNMPv3, SNTP, HTTP, HTTPS	
Warranty	Two years with advanced replacement*, Guardian® extended warranty also available	
Software Maintenance	One year maintenance free with purchase Additional years can be purchased Software updates available with maintenance	

One view of the entire enterprise



- ▶ Simplified, one-click access
- ▶ Consolidated access and power control on a single screen
- ▶ Sophisticated policy management with granular privileges

Scalable and Flexible Remote Access

- ▶ In-band access methods like RDP, VNC, Telnet and SSH
- ▶ Web browser interface
- ▶ SSH support for CLI access to serial targets connected to Dominion SX and KSX II

Virtual Machine Requirements

- ▶ ESX/ESXi 4.1, 5.0 or 5.1
- ▶ 2 GB memory
- ▶ 40 GB disk space
- ▶ VMware High Availability and Fault Tolerance for virtual appliance failover

Ready to manage smarter? Do it with CommandCenter Secure Gateway.
 Call 1.800.724.8090 or visit <http://www.raritan.com/kvm-switches/commandcenter-secure-gateway>

© 2015 Raritan Inc. All rights reserved. Raritan®, Know more. Manage smarter.™, CommandCenter®, Dominion®, Paragon®, IP-Reach®, Guardian®, Power IQ®, Universal Virtual Media™ and PX® are trademarks or registered trademarks of Raritan Inc. or its wholly-owned subsidiaries. All others are trademarks or registered trademarks of their respective owners.

* To qualify for advanced replacement under the standard warranty, you must register the product at www.raritan.com/products/extendedwarranty

Raritan is a leading provider of secure IT infrastructure management solutions that provide IT directors, managers and administrators the control they need to increase data center productivity, enhance branch office operations and increase overall power management efficiency. In over 50,000 locations around the world, our integrated, secure, in-band and out-of-band server access, control and power management products help companies better monitor and manage server access, utilization and energy consumption. Our intelligent PDUs offer remote power control and monitoring at the rack-and-device level, empowering data center owners with information to improve uptime and capacity planning, and efficiently utilize energy to save power and money. Raritan's OEM division provides embedded hardware and firmware for server and client management, including KVM over IP, IPMI, intelligent power management and other industry standards-based management applications. Based in Somerset, NJ, Raritan has 38 offices worldwide, serving 76 countries. For more information, please visit www.raritan.com